

HSL
HRT

Equity in the Helsinki Region Transport System Plan

EBT Master Class: Service suppliers and variants
22.3.12

Transport planner Mette Granberg, HSL

Helsinki Region Transport



Helsinki Regional Transport Authority HSL



Helsinki Regional Transport Authority (HSL)

- Plans and organizes public transport in the region and seeks to improve its operating conditions
- Procures bus, tram, metro, ferry and commuter train services
- Approves the public transport fare and ticketing system, as well as public transport fares
- Is responsible for marketing of public transport and passenger information
- Organizes ticket sales and is responsible for ticket inspections
- Is responsible for the preparation of the Helsinki Region Transport System Plan (HLJ)



Cooperation is an important part of transport system planning

- A Transport System Plan (TSP) is a long-term strategic plan that takes into consideration the transport system as a whole and its integration to land use
- Transport system planning is based on dialogue and cooperation between interest parties (regional and state authorities, cities and municipalities, business community, NGOs and residents)
- Transport system planning and cooperation is an ongoing process: the plan is revised / compiled approximately once in four years



Transport system plan is one key to influence decision making

Objectives of a Transport System Plan (TSP)

- produce binding decisions and a letter of intent on transport system development measures over the next few years
- ensure implementation and funding of the agreed measures in cooperation with the parties.



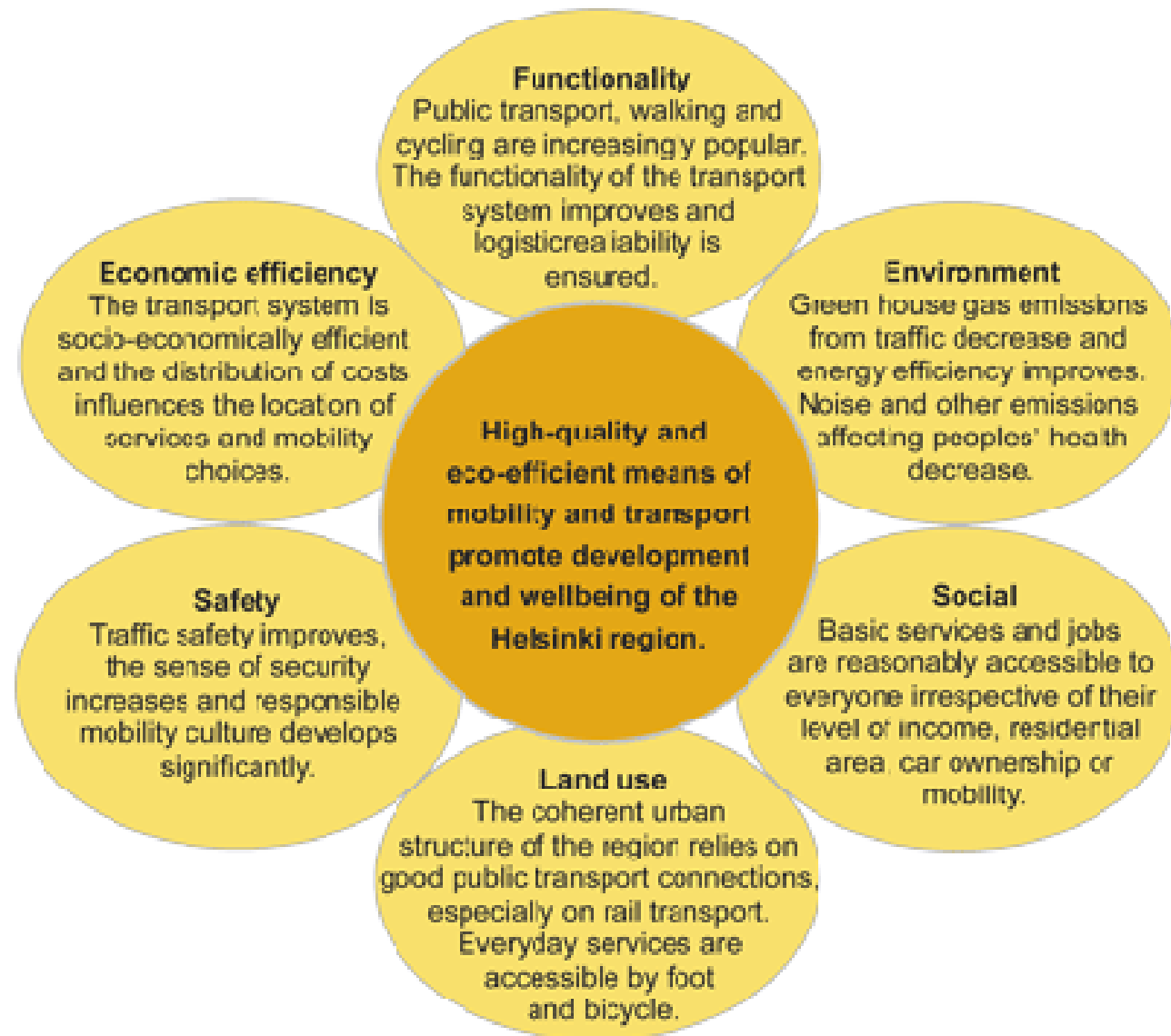
Transport System Planning in the Helsinki Region – and Equity?



Equity can be found in

... the vision and objectives of HLJ:

A key goal of the plan is to improve people's everyday lives and ensure equal possibilities of travelling to all citizens



Equity can be found in

... the making of the plan

- All transport modes are considered
- Participation is essential – and governed by law



... the end result



HLJ 2011 development levels

1.

Sustainable urban structure and land use

2.

Public transport, walking and cycling connections and services

3.

Mobility management, pricing and regulations

4.

Operation and maintenance of the transport system

5.

Transport infrastructure

Ongoing HLJ 2011 projects

- Planning a main cycling network for the Helsinki region
- Regional park-and-ride strategy
- Regional Traffic safety strategy



- TSP is needed to ensure the functioning of a sustainable and an equitable transport system (now and) in the future
- Increasing capacity as a solution for the growing use of car has met its end
 - in the future, influencing the demand of different modes in a balanced manner will probably play an important role in TSP
- Promoting walking and cycling is an efficient way of tackling not only transport-related problems but also health and societal problems ...and a way to increase equity!



More information on HLJ:
www.hsl.fi/en/hlj2011
(in Finnish at: www.hsl.fi/hlj)

